

Model 450 Mist Collector

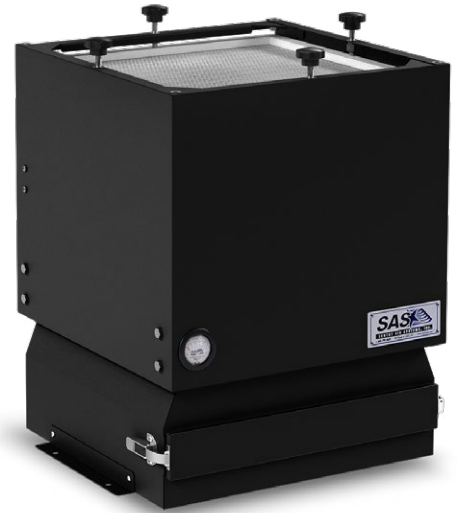
Model # SS-450-MIST



The **Model 450 Mist Collector** provides powerful air cleaning designed for mist collection on enclosed machinery such as *CNC mist elimination*, and for other systems that *produce coolant mist, water mist, and oil mist*. This compact unit easily integrates with existing machinery because of its small footprint and convenient mounting options (mounting brackets included). This patented device offers high efficiency, quiet operation, low power consumption, and minimal maintenance.

This system draws in mist into the **unique washable mist filter**, removing most of it from the ambient air, and releases the filtered air back into the surrounding room. By creating a recirculating airflow pattern, the **Model 400 Mist Collector** does not require external exhausting or ductwork. Also, this unit after collecting mist vapors, it conveniently drains the oil back into the machinery itself and may be reused depending upon the application. This mist collector utilizes a triple filter setup featuring the **unique washable mist pre-filter, activated carbon pre-filter**, and choice of main filter including **HEPA filter** (up to 99.97% efficiency on particles 0.3 microns and larger) and **ASHRAE filter** (up to 95% efficiency on particles 0.5 microns and larger).

The **Model 450 Mist Collector** can provide an effective and economical solution for CNC machines, milling, grinding, and various other applications requiring mist collection. *Three smaller models [SS-200-MIST, SS-300-MIST, & SS-400-MIST] are also available to provide mist collection for smaller machines.*



Model 450 Mist Collector



Model 450 Mist Collector installed on a CNC machine

Product Features

- **Includes:** variable speed controller (115V only), ON/OFF toggle switch (220V only), mounting brackets, and washable mist pre-filter.
- **Optional:** Magnehelic Gauge
- Quiet, reliable, and low maintenance operation
- Low power consumption
- Long filter life
- Simple, quick “no tool” filter change

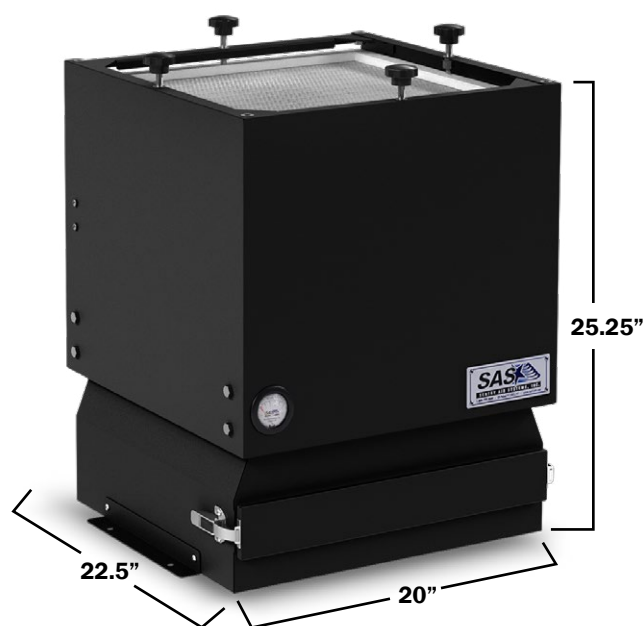


21221 FM 529 Rd, Cypress, TX 77433
1.800.799.4609 • sales@sentryair.com

www.sentryair.com

Mist Collection Equipment

Product Specifications



Dimensions are approximate



21221 FM 529 Rd
Cypress, TX 77433
1.800.799.4609
sales@sentryair.com

www.sentryair.com

Base Unit Dimensions	Length: 22.5" (includes control box) Width: 20" Height: 25.25"
Inlet Options	4", 5", 6", 10"
Cabinet Material	16 Ga. carbon steel
Weight (approximately)	62 - 112 lbs
Air Volume (approximately)	High: up to 950 CFM Low: down to 50 CFM
Electrical	115/1/60, 10.7 amps 220/1/50, 5.35 amps 8' grounded power cord with NEMA 5-15P plug
Sound Level (at 3' from inlet)	Approx. 72 dba (High)
Main Filter Options	Pre-Filters: Washable Mist Pre-Filter Activated Carbon Pre-Filter Main Filters: HEPA [up to 99.97% efficiency on particles 0.3 microns and larger] ASHRAE [up to 95% efficiency on particles 0.5 microns and larger]
Limited Warranty	Limited two year warranty from date of shipment on defects due to materials or workmanship. Limited six-month warranty on fan/motor assembly
Patent #	5,843,197