

Model 400/450 Mist Collector

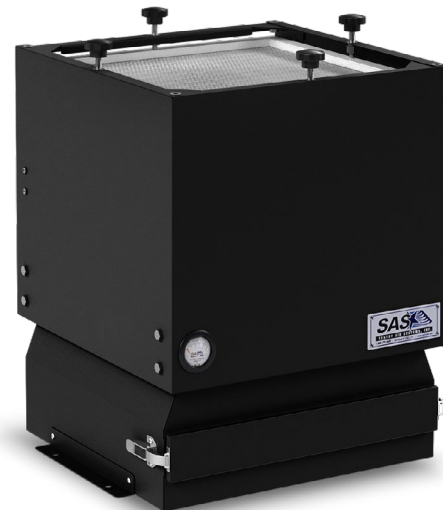
Model # SS-400/450-MIST



The **Model 400/450 Mist Collector** provides powerful air cleaning designed for mist collection on enclosed machinery such as *CNC mist elimination*, and for other systems that *produce coolant mist, water mist, and oil mist*. This compact unit easily integrates with existing machinery because of its small footprint and convenient mounting options (mounting brackets included). This patented device offers high efficiency, quiet operation, low power consumption, and minimal maintenance.

The system draws in mist into the **unique washable mist filter**, removing most of it from the ambient air, and releases the filtered air back into the surrounding room. By creating a recirculating airflow pattern, the **Model 400/450 Mist Collector** does not require external exhausting or ductwork. Also, this unit after collecting mist vapors, it conveniently drains the oil back into the machinery itself and may be reused depending upon the application. This mist collector utilizes a triple filter setup featuring the **unique washable mist pre-filter**, **activated carbon pre-filter**, and choice of main filter including **HEPA filter** (up to 99.97% efficiency on particles 0.3 microns and larger) and **ASHRAE filter** (up to 95% efficiency on particles 0.5 microns and larger).

The **Model 400/450 Mist Collector** provides an effective and economical solution for CNC machines, milling, grinding, and various other applications requiring mist collection. *Also, two smaller models [SS-200-MIST & SS-300-MIST] are available for applications that require less airflow.*



Model 400/450 Mist Collector



Model 400/450 Mist Collector installed on a CNC machine.

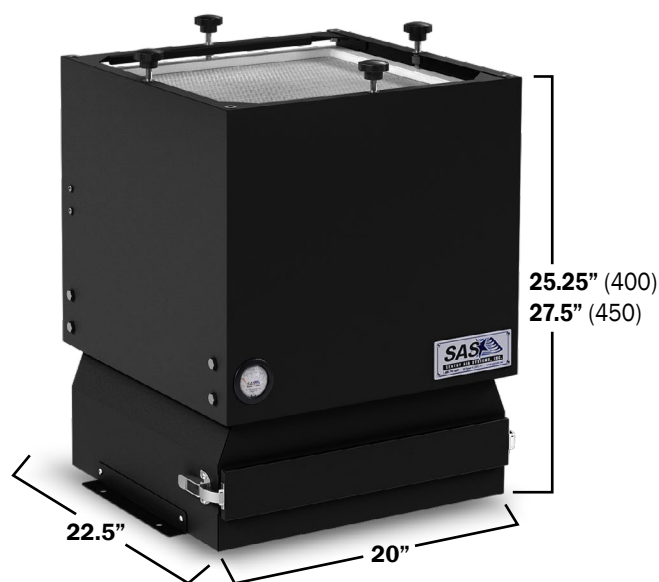
Product Features

- **Includes:** variable speed controller, mounting brackets, and washable mist pre-filter
- **Optional:** Magnehelic Gauge and hour counter
- Quiet, reliable, and low maintenance operation
- Low power consumption
- Long filter life
- Simple, quick “no tool” filter change



21221 FM 529 Rd, Cypress, TX 77433
1.800.799.4609 • sales@sentryair.com
www.sentryair.com

Product Specifications



Dimensions are approximate.

Base Unit Dimensions (L x W x H)	400: 22.5" x 20" x 25.25" 450: 22.5" x 20" x 27.5" (includes control box in length)
Inlet Options	4", 5", 6", 10"
Cabinet Material	16 ga. carbon steel
Weight	Approx. 50 - 110 lbs.
Air Volume (approximately)	400: 50 to 700 CFM 450: 0 to 877 CFM (from low to high)
Electrical	400: 115/1/60, 2.5 amps 220/1/50 or 60, 1.5 amps 450: 115/1/60, 5.2 amps 8' grounded power cord with NEMA 5-15P plug
Sound Level (3' from inlet)	400: Approx. 60 dba (high) 450: Approx. 71 dba (high)
Main Filter Options	<i>Pre-Filters:</i> Washable Mist Pre-Filter Activated Carbon Pre-Filter <i>Main Filters:</i> HEPA [up to 99.97% efficiency on particles 0.3 microns and larger] ASHRAE [up to 95% efficiency on particles 0.5 microns and larger]
Patent #	5,843,197



21221 FM 529 Rd
Cypress, TX 77433
1.800.799.4609
sales@sentryair.com

www.sentryair.com